

Log It All

Log It All captures real-life data enabling you to give more personalised recommendations to your clients based on their real-world listening lifestyle.



Use quantitative data about listening lifestyles to support your recommendations



Clearly demonstrate the benefits of technology levels

You experience:

- An opportunity to get to know your client faster.
- Less stress about making technology recommendations thanks to evidence based data.
- The opportunity to increase revenue from selling higher technology levels.
- Easier troubleshooting of performance concerns when you can see where clients are spending their time.
- The advantage of providing an enhanced experience when combined with FLEX:TRIAL™ or FLEX:UPGRADE™

Clients experience:

- An objective breakdown of the listening environments they spend time in.
- A more personalised recommendation based on their unique listening lifestyles.
- More realistic expectations about their journey through greater involvement in the process and more informed decision making.
- Confidence in your ability to troubleshoot performance quickly.



Get the most from your experience! Contact Unitron to learn more.
Visit www.unitronvivante.com

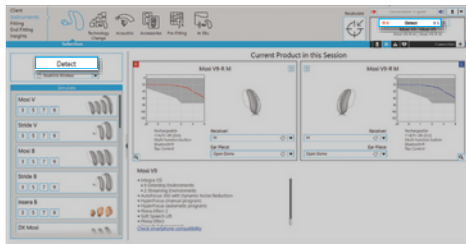


Unitron makes life vibrant with amazing hearing solutions designed to make the experience easy. Because everyone **deserves to Love the experience.™**



Log It All captures real-life data enabling you to give more personalized recommendations to your clients based on their real-world listening lifestyle. Data is presented using easy-to-understand visuals, showing a breakdown of your client's listening environments and speech direction, making it easy to see how well each technology level will support their individual needs.

Step 1: Detect the hearing instrument(s)



- Here Connect the hearing instrument(s) to Unitron TrueFit™ fitting software using the compatible programming interface
- Click the [Detect](#) button
- The detection dialog will indicate the hearing instrument(s) have been successfully detected

From the Instruments > Selection screen, click on Detect



Note: You can easily view your clients' Log It All information without connecting to their hearing instruments – see the [Success Check](#) quick start guide for more information.

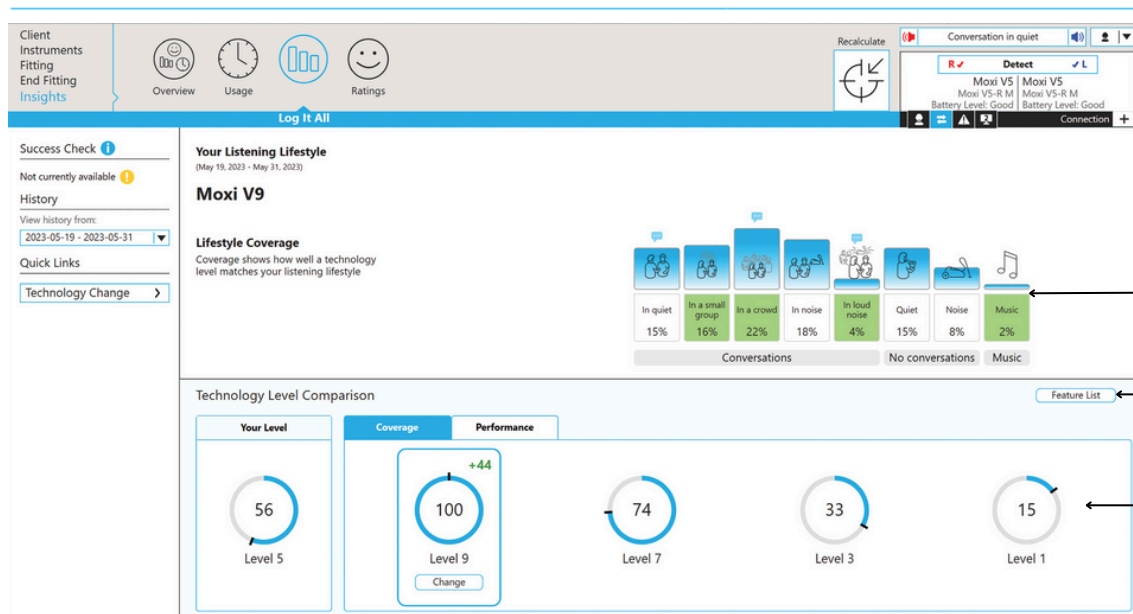
Step 2: View Insights data



- After detection of previously fit hearing instruments, TrueFit will open to the Insights overview screen, or you can navigate to this page by going to [Insights](#)
- Click the [Log It All](#) button to show the client's listening lifestyle details

Go to Insights > Log It All

Step 3: Review the coverage data



- The bars represent how much time a client has spent in each environment
- The bars in blue represent environments that are supported for the technology level being viewed
- Green bars show environments that are added if the technology level is increased, and red bars show environments that are not supported at a lower technology level

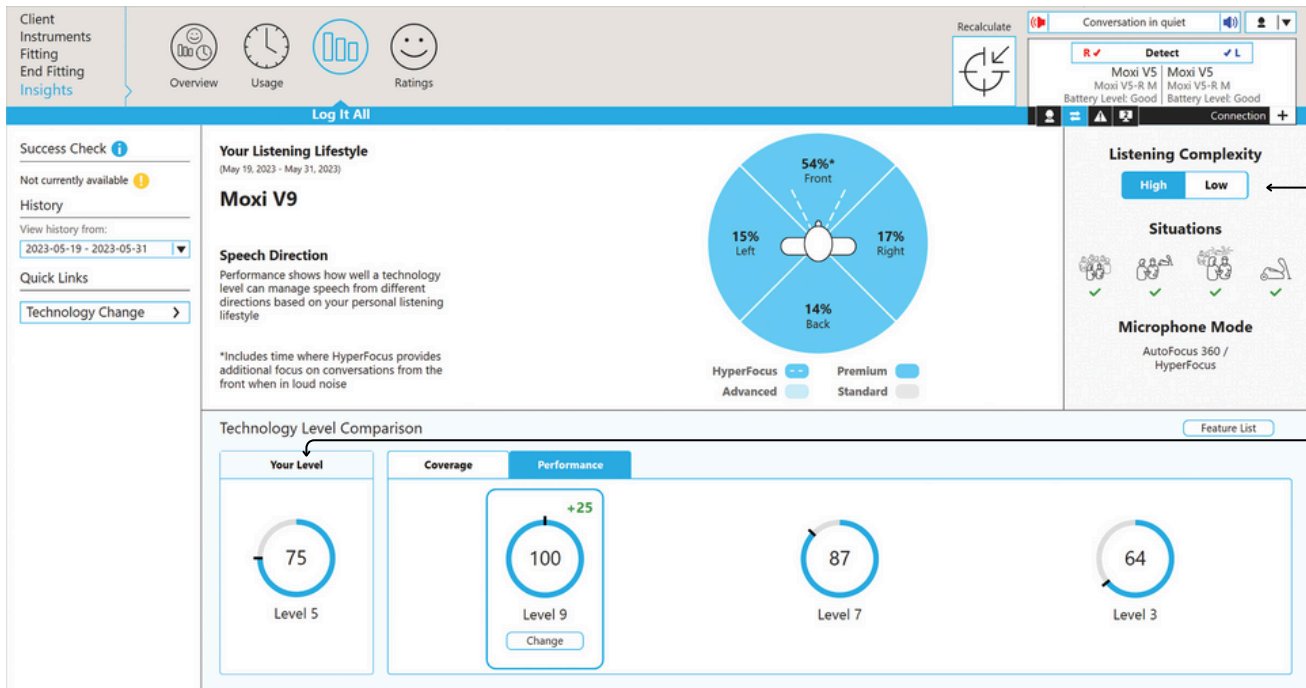
Tip:

Click [Feature List](#) to see a comparison overview between the current technology level and the new technology level, including which features are gained or lost

- Select each technology level at the bottom of the screen to highlight which environments are gained or lost
- The coverage score is the percentage of time spent in environments supported by each technology level



Step 4: Review the performance data



Toggle between high and low complexity to see the speech direction and sound awareness capability, as well as the supported listening environments and the max microphone mode

The performance score is derived from:

- Time spent in high vs. low complexity environments
- How often speech is coming from different directions when in complex listening environments
- Features available at each technology level



Did you know?

If the client opts to change their technology level, you can click the [Change](#) button to automatically start the technology change process