



Welcome to the  
**Vivante™**  
*experience*

Five steps to a  
totally personalized  
hearing solution

**Vivante Product Selection  
Guide 3.0**

# Five steps to the hearing solution that's right for you

---

Step one

**Where do you experience hearing challenges?**

---

Step two

**Explore the technology levels**

---

Step three

**Pick a style that suits you**

---

Step four

**Color your choice**

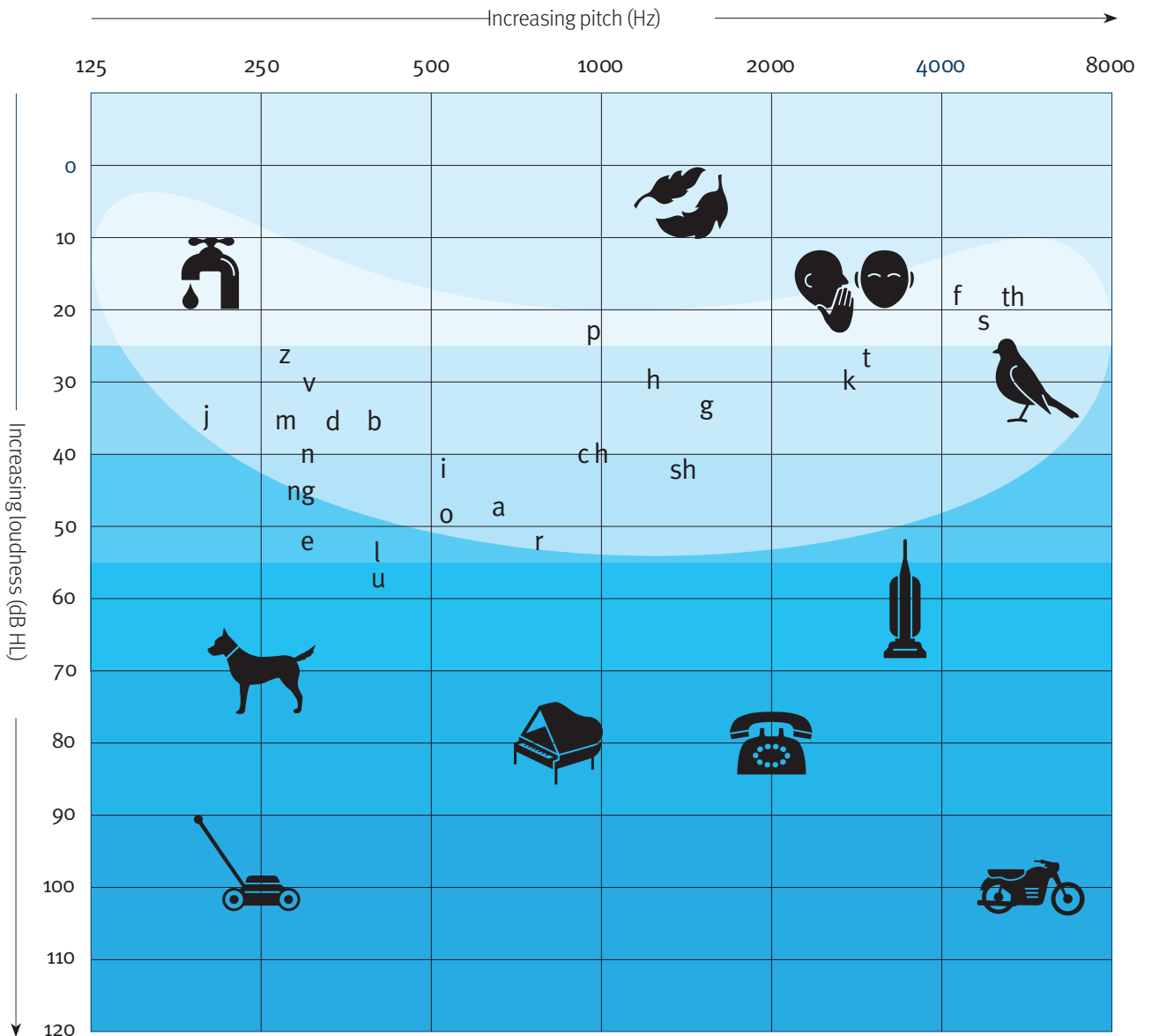
---

Step five

**Connect to convenience**

# Step one

## Where do you experience hearing challenges?



## Step two

# Explore the technology levels

Now we'll select the technology level that best matches your listening lifestyle.

### What's included

### What you're missing

#### Level 9 ★★★★★

Premium performance in 8 environments and our most sophisticated features that automatically let you focus on speech and know where it's coming from in crowds and loud background noise (where you spend \_\_\_% of your time). Enjoy the ability to hear in quiet as well as delightful music automatically. Plus engage in conversations in the car with a special program that pinpoints and amplifies speech from any direction no matter where you are sitting.

Nothing. You've got everything available to suit your unique lifestyle.

#### Level 7 ★★★★

Advanced performance in 6 environments with the ability to help you focus on speech coming from the front and sides in challenging situations, and hear in quiet situations, plus an automatic music program and a manual car program that can be pre-set to focus on speech from one location.

The most sophisticated features to focus on speech from different directions in noisy conversations in loud noise and the car.

#### Level 5 ★★★

Standard performance in 4 environments that includes features to help you in multiple quiet and noisy environments.

Automatic optimization for conversation in small groups and automatic engagement of a music program.

#### Level 3 ★★

The essentials in 2 environments. Limited ability to adjust automatically to accommodate more challenging listening situations. The flexibility to customize your experience with the fully featured Remote Plus app and control your streamed audio, calls and virtual assistants with tap control.

Automatic adjustment for comfort in quiet and noisy situations without speech.

# Improve quiet and challenging conversations with our latest advanced technology.

## Automatic program

### 8 environments



Conversation in quiet



Conversation in noise



Quiet



Noise



Conversation in a small group



Music



Conversation in a crowd



Conversation in loud noise

## Manual programs



Conversation in loud noise



360 conversation in car

Various manual programs can be set

### 6 environments



Conversation in quiet



Conversation in noise



Quiet



Noise



Conversation in a small group



Music



Conversation in loud noise

Car with speech

Various manual programs can be set

### 4 environments



Conversation in quiet



Conversation in noise



Quiet



Noise

Various manual programs can be set

### 2 environments



Conversation in quiet



Conversation in noise

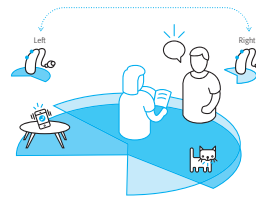
Various manual programs can be set

# Sound performance by technology level

## Low complexity

### Level 9

Premium  
★★★★★

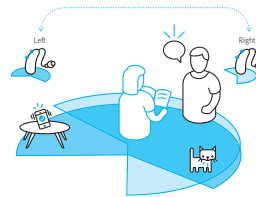


#### Pinna Effect 2

Binaural microphone mode that is designed to compensate for cues typically lost with hearing aids, which are needed for localization.

### Level 7

Advanced  
★★★★

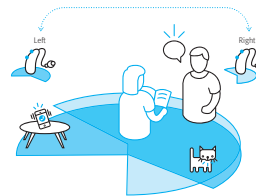


#### Pinna Effect 2

Binaural microphone mode that is designed to compensate for cues typically lost with hearing aids, which are needed for localization.

### Level 5

Standard  
★★★



#### Pinna Effect 2

Binaural microphone mode that is designed to compensate for cues typically lost with hearing aids, which are needed for localization.

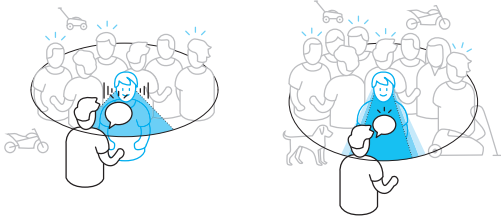
### Level 3

Essential  
★★

#### Pinna Effect

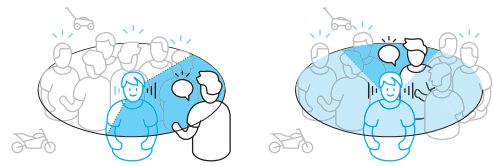
Minimizes the impact of acoustic cues typically lost with hearing aids.

## High complexity



### Speech from front

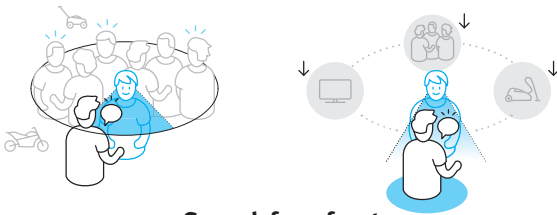
AutoFocus 360 identifies and focuses on speech from the front to provide a greater increase of speech than other technology levels. Dynamic noise reduction is active and adjustable to further reduce surrounding noise. For face-to-face conversations, in loud noise, and when the wearer is stationary, HyperFocus engages within the conversation in loud noise environment.



### Speech from side

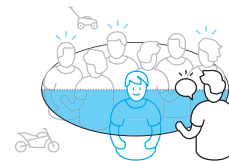
### Speech from back

AutoFocus 360 can identify and focus on speech from any direction while reducing interfering noise.



### Speech from front

AutoFocus identifies, focuses on and increases speech from the front. Dynamic noise reduction is active and adjustable to further reduce surrounding noise.



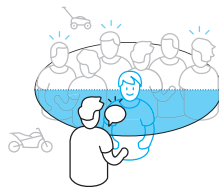
### Speech from side and back

AutoFocus applies a wide front beam to capture speech partially from the sides.



### All high complexity situations

Applies a wide front beam capturing the speech from the front.



### All high complexity situations

Applies a wide front beam capturing speech from the front.

## Step three

# Pick a style that suits you

Choose from products available on the **Vivante™** platform.

Vivante hearing aids are designed to focus on comfort, aesthetics and ease-of-use. Conveniently stream phone calls and other media, like music, podcasts and digital assistants right to your hearing aids, easily controlling them with just a tap.\*

### Moxi (Receiver-in-canal)



**Moxi™ V-312**

Our smallest hearing aid with a traditional battery and direct connectivity

Receiver-in-canal (RIC)



**Moxi V-R**

Our smallest rechargeable with direct connectivity

Receiver-in-canal (RIC)



**Moxi V-RT**

Our rechargeable with direct connectivity and telecoil

Receiver-in-canal (RIC)



**Moxi V-RS**

Our thinnest rechargeable hearing instrument with direct connectivity

Receiver-in-canal (RIC)

### Stride (Behind-the-ear)



**Stride™ V-UP**

Our Ultra Power BTE with direct connectivity, telecoil, and traditional 675 battery

Behind-the-ear (BTE)



**Stride V-PR**

Our rechargeable BTE with direct connectivity

Behind-the-ear (BTE)



## Chargers for the **Vivante** platform

Charging case for Moxi V-R and Moxi V-RT rechargeable hearing aids



Charging case for Moxi V-RS rechargeable hearing aids



Charging cases for Stride rechargeable hearing aids



## Products on the **Blu** platform

Other styles that could suit your hearing needs are available on the Blu platform\*\*



### **Insera™ B-312**

Our wireless ITE model with direct connectivity

In-the-ear (ITE)



### **Insera B-312 NW O**

Our non-wireless omni ITE model with a telecoil

In-the-ear (ITE)



### **Insera B-10 NW O**

Our smallest non-wireless omni ITE model with a telecoil

In-the-ear (ITE)

Hearing aids shown at actual size. Charging cases not shown at actual size

\*Tap control is available for rechargeable models only.

\*\* Hearing aids on the Blu platform differ from the Vivante platform. Speak with your hearing care professional for more information.

Step four

# Color your choice



Sand  
(R8)



Amber  
(P2)\*



Espresso  
(P4)\*



Platinum  
(P6)



Pewter  
(P7)\*



Charcoal  
(P8)



Beige  
(26)



Tan  
(14)



Cocoa  
(22)



Brown  
(28)



Black  
(06)\*\*

Colors shown on the Moxi V-R style are also available on all Moxi V-RT, Moxi V-312 and Stride styles.  
Moxi V-R shown at actual size.

\*Colors not available on Moxi V-RS.

\*\*Available for Insera B-312 and Insera B-10 IIC styles only.

## Step five

# Connect to convenience



**TV Connector**

Stream your favorite media wirelessly in stereo sound with the TV Connector.



**PartnerMic**

PartnerMic is an easy-to-use lapel microphone ideal for one-on-one conversations.



**Remote Control**

Discreetly adjust volume and switch programs with the Remote Control.

### Remote Plus app

The Remote Plus app puts easy personalization at your fingertips.



Scan to download the Remote Plus app.



iOS



Android

**Need more help in challenging listening situations like meetings or conversations in noise or over distance?**  
Let's discuss if a Roger™ device could be a good fit for you.

Accessories shown at actual size.

Accessories shown are available with all Vivante products and wireless products on the Blu platform.

Apple and the Apple logo are trademarks of Apple Inc., registered in the U.S. and other countries. App Store is a service mark of Apple Inc.

Google Play and the Google Play logo are trademarks of Google Inc

## What's next?

- Discuss your needs

---

- Try at home

---

- Come in for a follow-up assessment

---

- Personalize your solution

---

- Come in for your final fitting on:

---

Recommendation:			
Technology level:	Style:	Warranty:	Cost:
Accessories:			

## Notes:

---

---

---



At Unitron, we empower people with life-enhancing hearing experiences that fit seamlessly into their world. Our sound performance technology, Experience Innovations, and intuitive design work perfectly together to provide personalization and optimization. Because everyone deserves to **Love the experience**.™

© 2023 Sonova AG, or its affiliates.

028-6711-02/V3.00/2023-11/dr

[unitron.com](https://unitron.com)

